

SpringFlow 250 Shell & Tube Heat Exchanger

Technical Specifications (page 1 of 3)

Heat Exchanger Type: Shell & Tube (multi-pass)

Materials: *Shell:* 304 Stainless Steel
Tube: 304 Stainless Steel
Fittings: 304 Stainless Steel

Construction: TIG welded

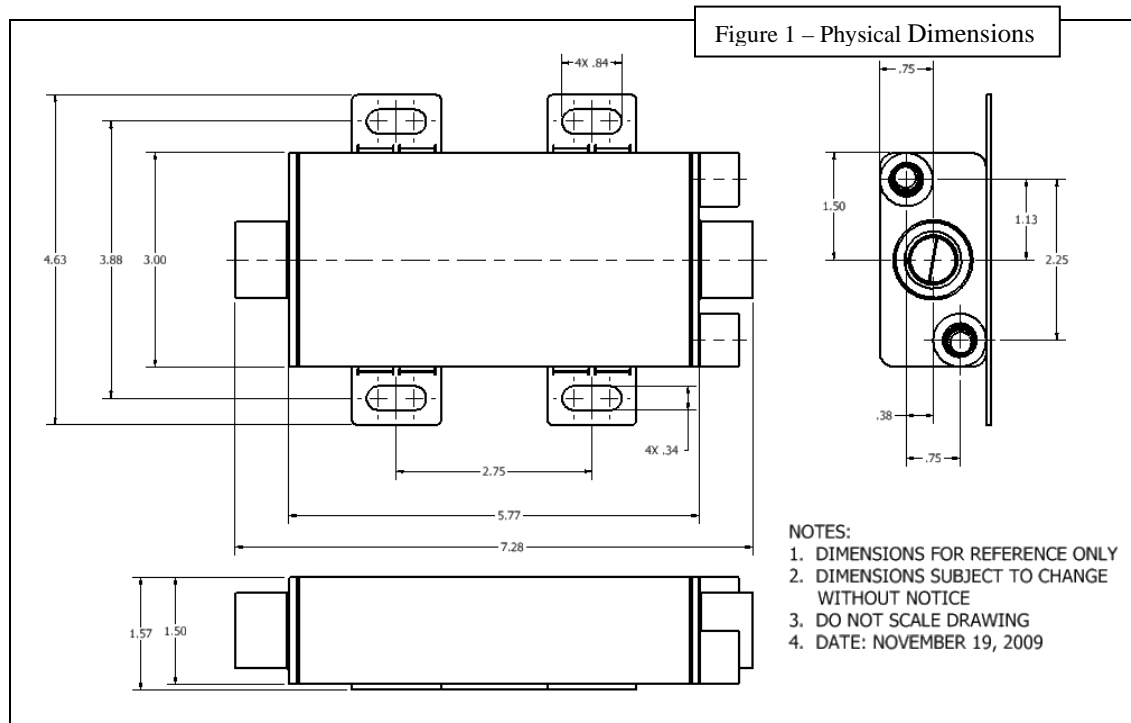
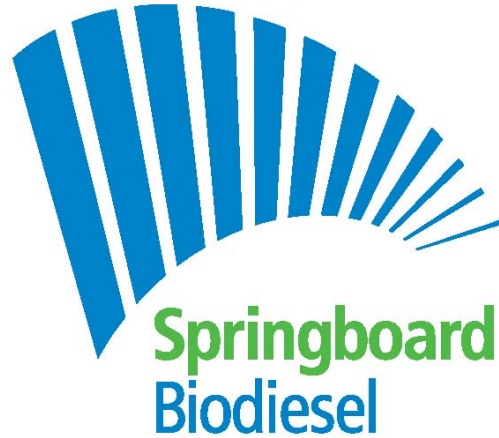
Weight: 1200 grams (2.64 lbs)

Tube Surface Area: 250 sq cm (39 sq in)

Ports: *Shell:* 1/2" NPT Female
Tube: 1/4" NPT Female

Maximum Pressure: *Shell:* 30 PSI (liquids/gases), 75 PSI (liquids only)
Tube: 30 PSI (liquids/gases), 75 PSI (liquids only)

Overall Dimensions: (See Figure 1)

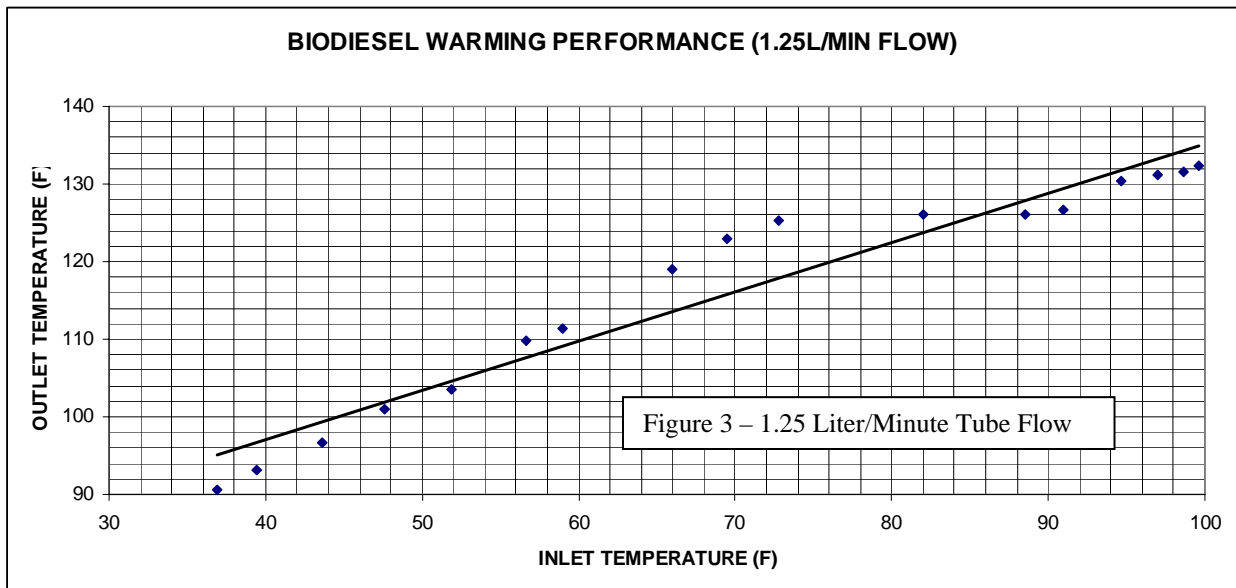
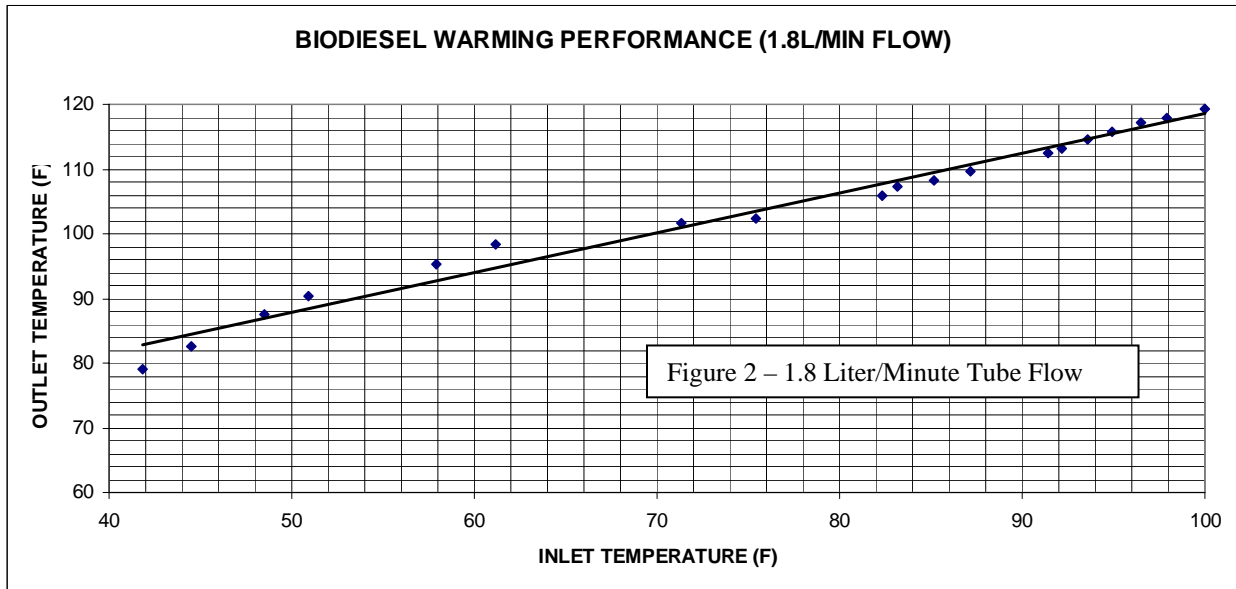


SpringFlow 250 Shell & Tube Heat Exchanger
Technical Specifications (page 2 of 3)

Performance:*

**Charts below reflect the following parameters:*

Shell Side Fluid: Water (175° F)
Flow Rate: 3.0 GPM
Tube Side Fluid: Biodiesel



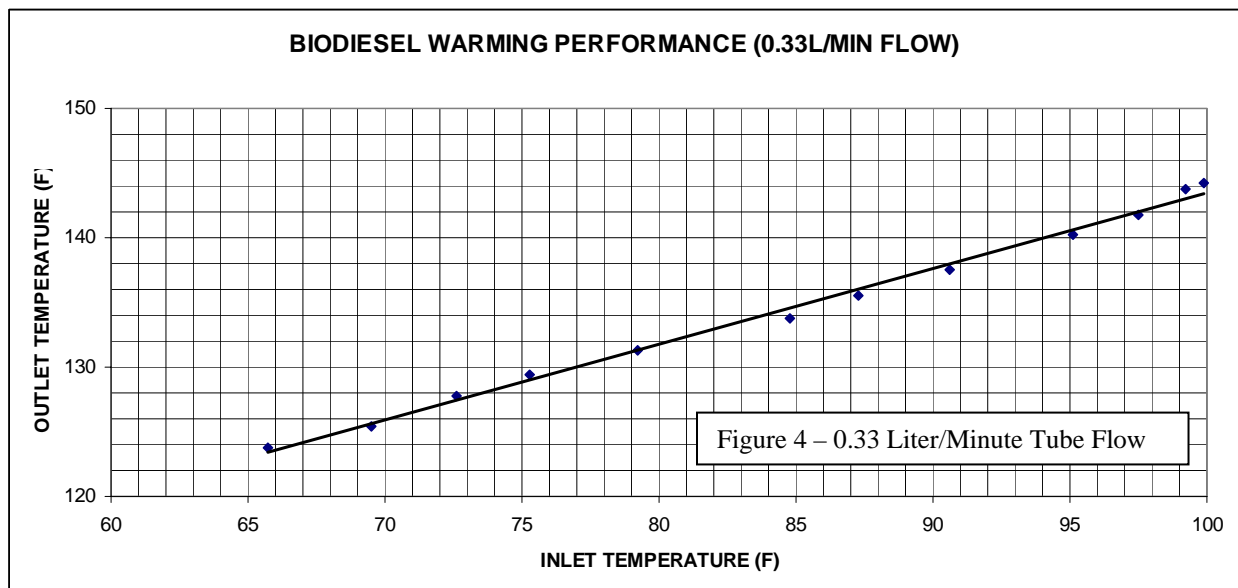
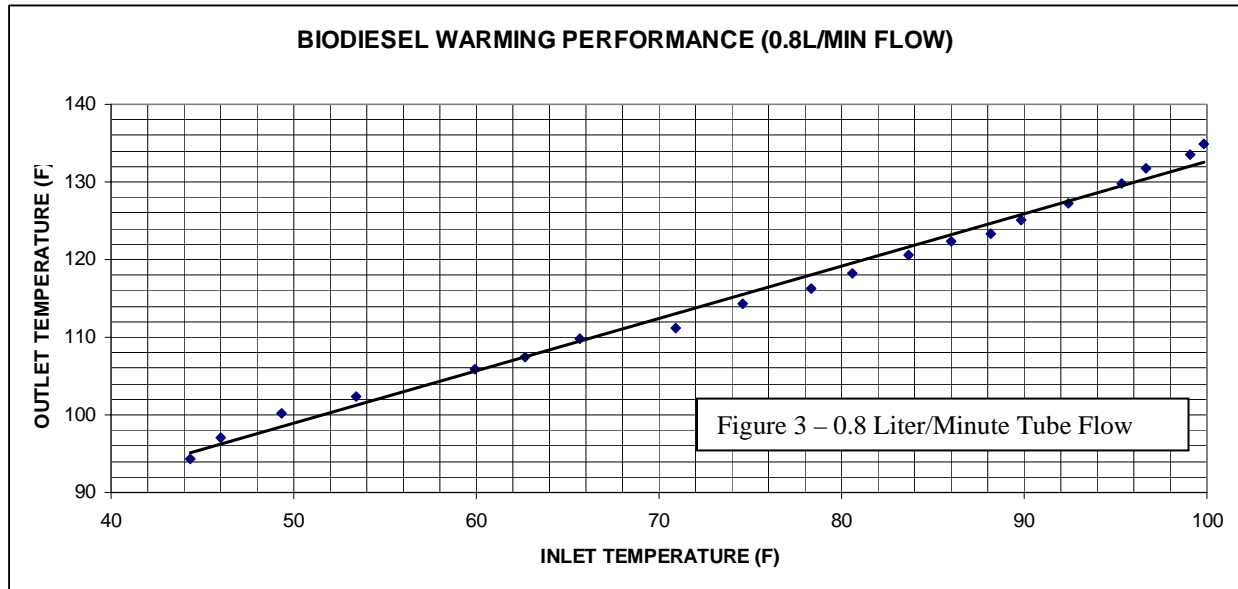
Charts for Reference Only

SpringFlow 250 Shell & Tube Heat Exchanger
Technical Specifications (page 3 of 3)

Performance:*

**Charts below reflect the following parameters:*

Shell Side Fluid: Water (175° F)
Flow Rate: 3.0 GPM
Tube Side Fluid: Biodiesel



Charts for Reference Only